

QUESTIONS TO CABINET MEMBERS

Question Number	Question asked by Councillor:	Subject
CABINET MEMBER FOR CHILDREN, YOUNG PEOPLE AND FAMILIES Councillor Alisa Flemming		
CQ100-17	Bird, M	Teenage pregnancies
CABINET MEMBER FOR TRANSPORT AND ENVIRONMENT Councillor Stuart King		
CQ101-17	Bird, M	Car parking spaces
CABINET MEMBER CULTURE, LEISURE AND SPORT Councillor Timothy Godfrey		
CQ093-17	Pollard, H	Parks

CQ100-17 from Councillor Margaret Bird

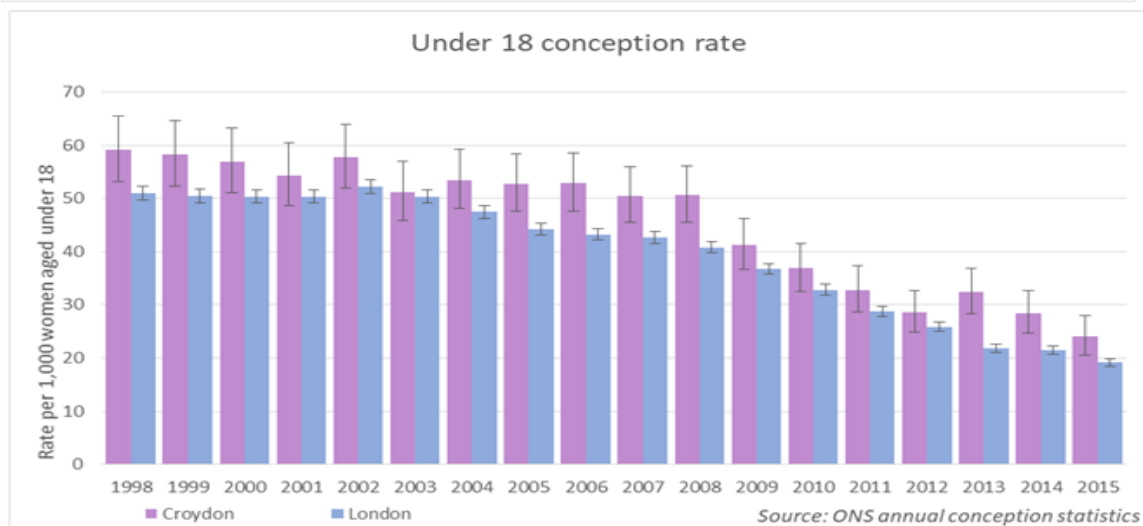
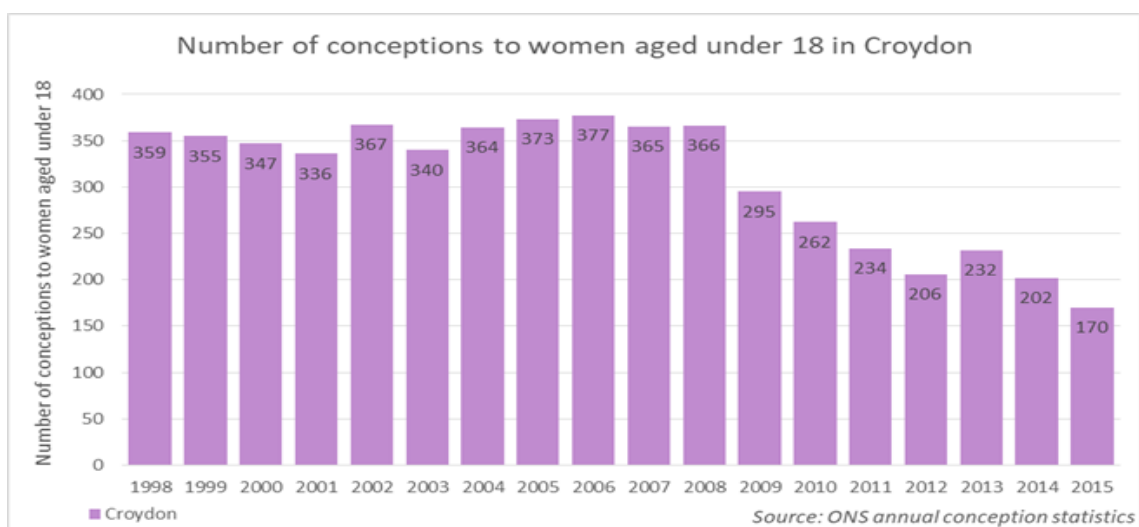
Councillor Alisa Flemming

How many teenage pregnancies were there last year in the Borough and how does that compare with previous years?

Reply

The rate of teenage conceptions in Croydon is continuing to decrease year on year and now stands at 24.2 per 1000 15-17 year olds, which equates to 170 conceptions in the year 2015/16. This is in line with a pan London reduction in teenage conception rates.

We are continuing to focus on this age group with a range of targeted services as well as prevention and support initiatives.



CQ101-17 **from Councillor Margaret Bird**

Councillor Stuart King

With roadside parking space at a premium, can the cabinet member assure me that vehicles parked on the highway that are uninsured, are reported by enforcement to the DVLA for action?

Reply

The council's Parking Services team have no way of knowing if a vehicle is insured or not. The police are the only body that can check if vehicles are insured and can take necessary enforcement action.

The council's Abandoned Vehicle Team can and do deal with reports of suspected abandoned vehicles and will take appropriate action, including removal of vehicles.

Removal of vehicles without a valid road tax or MOT is the responsibility of DVLA, who operate a website where members of the public can check if a vehicle has a valid road tax or MOT. Members of the public can report untaxed vehicles directly to DVLA, via the website, which is <https://www.gov.uk/check-vehicle-tax>

CQ093-17 **from Councillor Helen Pollard**

Councillor Timothy Godfrey

Can you tell me the number of visitors to parks in Croydon. Please provide details of the number of visitors to each of the 127 parks for the last 5 years. Can you also provide details of how many visitors are expected in each of the next two years. Please also provide this data for all Croydon's parks combined.

Provide details of the seasonal differences in visitor numbers.

Reply

As Croydon parks and green spaces are open access, it is challenging to quantify the number of visitors per park per annum. According to Monitoring Engagement with the Natural Environment (15/16) and Public Health Outcomes Framework, 15.2% of Croydon's population utilise outdoor space for exercise/ health reasons.

As part of the Ambitious for Parks programme, the Council are looking at ways in which we can increase participation across Croydon parks and green spaces using a number of mechanisms- for example Croydon Parks Vision (parks master planning pilot) and Outdoor Play Pitch Strategy (looking at both supply and demand across a number of sports including football, rugby and tennis). These initiatives are being used to capture data and insight from parks and green spaces; to clarify baseline satisfaction/ participation and the impact of future initiatives.